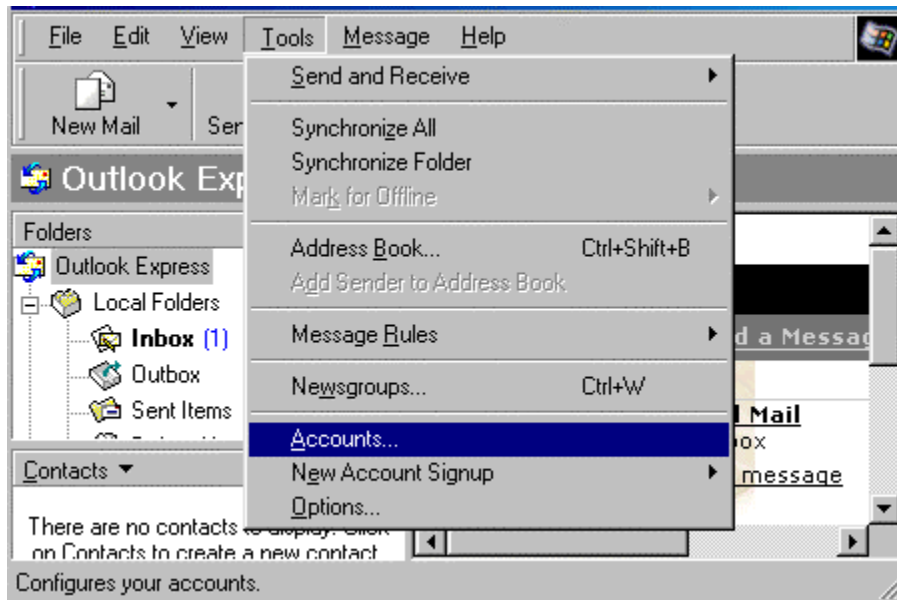




[Visit Internet Fixes](http://www.internetfixes.com)

## How to Configure Outlook Express 5.0 for Web Hosting Developer Accounts

1. From the Tools menu, choose Accounts.

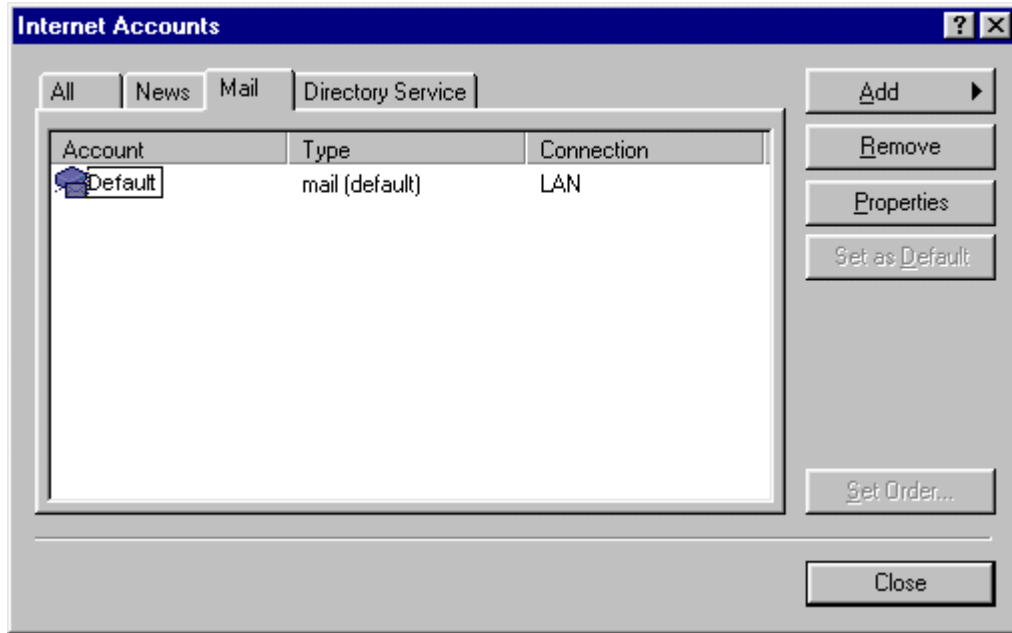


2. Click on the Mail tab.
3. Select your email account in the list.
4. Click the Properties button.

[Visit Internetfixes By Clicking Here!](http://www.internetfixes.com)  
Or Going To <http://www.internetfixes.com>



[Visit Internet Fixes](http://www.internetfixes.com)



5. Click on the General tab.
6. In the Name box, type your full name.
7. In the E-mail address box, type your email address.

**[Visit Internetfixes By Clicking Here!](http://www.internetfixes.com)**  
**[Or Going To http://www.internetfixes.com](http://www.internetfixes.com)**



[Visit Internet Fixes](http://www.internetfixes.com)

A screenshot of a Windows-style dialog box for configuring a mail account. The dialog has five tabs: 'General', 'Servers', 'Connection', 'Security', and 'Advanced'. The 'General' tab is selected. It contains two main sections: 'Mail account' and 'User information'. The 'Mail account' section has a text box with a red warning message: 'Your ISP's Name usually ends up here.' The 'User information' section has four text boxes: 'Name' (containing 'Your Name'), 'Organization', 'E-mail address' (containing 'mailbox@yourdomain.com'), and 'Reply address'. At the bottom of the dialog is a checked checkbox labeled 'Include this account when doing a full Send and Receive' and three buttons: 'OK', 'Cancel', and 'Apply'.

8. Click on the Servers tab.
9. In the Incoming mail (POP3) box, type the POP3 mail server name specific to your domain (i.e. pop.yourdomain.com).
10. In the Outgoing mail (SMTP) box, type the SMTP mail server name specific to your domain (i.e. mail.yourdomain.net if you connect to the internet through ISP).

**Note:** If connecting through another ISP, type in their SMTP server address.

11. Click the Log on using radio button in the Incoming Mail Server area.
12. In the Account name box, type your username.
13. In the Password box, type your password.

**[Visit Internetfixes By Clicking Here!](http://www.internetfixes.com)**  
**[Or Going To http://www.internetfixes.com](http://www.internetfixes.com)**



[Visit Internet Fixes](http://www.internetfixes.com)

A screenshot of the 'Servers' tab in an email client's settings window. The window has tabs for 'General', 'Servers', 'Connection', 'Security', and 'Advanced'. The 'Servers' tab is active. It contains three sections: 'Server information', 'Incoming Mail Server', and 'Outgoing Mail Server'. In the 'Server information' section, 'Outgoing mail (SMTP):' is set to 'Mail.yourISP.com' and 'Incoming mail (POP3):' is set to 'pop.yourdomain.com'. A dropdown menu shows 'POP3' selected. The 'Incoming Mail Server' section has 'Log on using' selected, with 'Account name:' set to 'mailbox%yourdomain.com' and 'Password:' set to 'xxxxxxx'. The 'Outgoing Mail Server' section has 'My server requires authentication' unchecked and a 'Settings...' button. At the bottom are 'OK', 'Cancel', and 'Apply' buttons.

14. Click on the Connection tab.

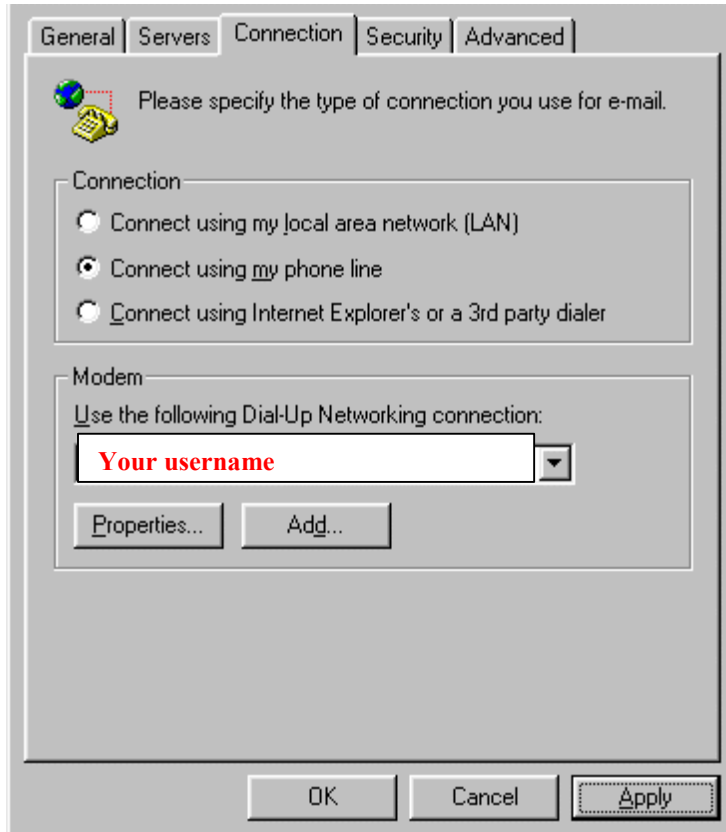
15. Click the down arrow on the Use the following Dial-Up Networking connection drop-down list and choose your connection.

16. Click the OK button.

[Visit Internetfixes By Clicking Here!](http://www.internetfixes.com)  
Or Going To <http://www.internetfixes.com>



[Visit Internet Fixes](#)



**Note:** If connecting through another ISP or a LAN, select the proper connection.

17. Click the Close button.

**You have successfully configured Outlook Express 5.0 for Web Hosting developer accounts.**

**[Visit Internetfixes By Clicking Here!](#)  
[Or Going To http://www.internetfixes.com](http://www.internetfixes.com)**