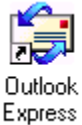




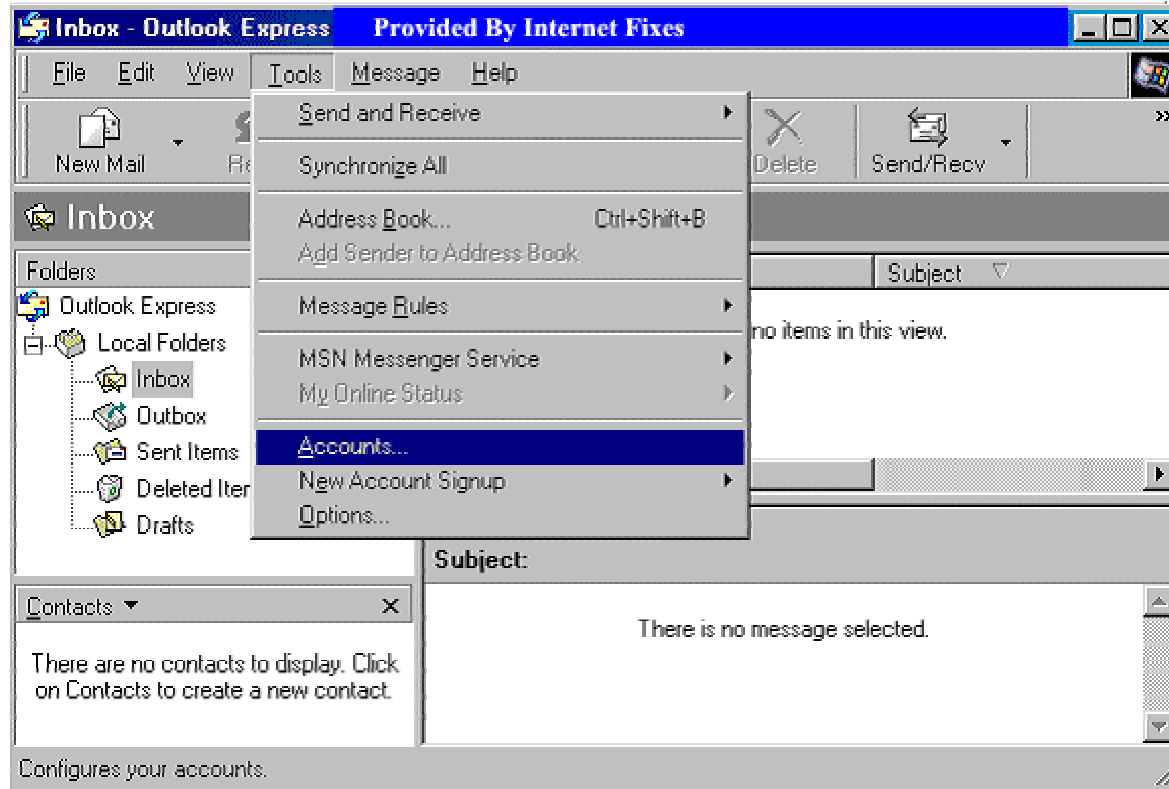
HOW TO CONFIGURE YOUR OUTLOOK EXPRESS FOR USE WITH YOUR ONE MAIN EMAIL ACCOUNT

To configure Outlook Express for use with your One Main email account, choose Accounts from the Tool Menu and click on Add, then Mail

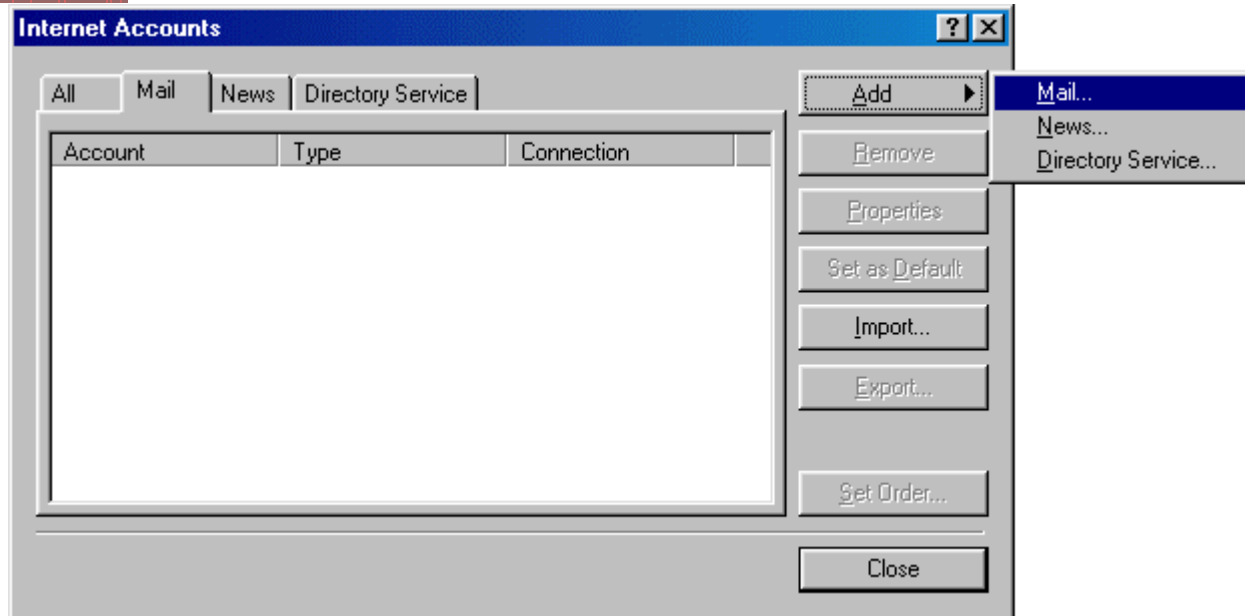
1. **Open Outlook Express.** To configure Outlook Express for use with your One Main email account, choose Accounts from the Tool Menu and click on Add, then Mail.



2. **From the Tools menu, choose Accounts....**



3. Click on the Mail tab.
4. Click the Add button, and choose Mail....



5. In the Display name: field, type in your name.
6. Click the Next button.

A screenshot of the 'Internet Connection Wizard' dialog box. The title bar reads 'Internet Connection Wizard'. The main area is titled 'Your Name' and contains the following text: 'When you send e-mail, your name will appear in the From field of the outgoing message. Type your name as you would like it to appear.' Below this is a text input field labeled 'Display name:' containing the text 'Your Name'. Underneath the input field is the example text 'For example: John Smith'. At the bottom of the dialog are three buttons: '< Back', 'Next >', and 'Cancel'. The 'Next >' button is highlighted with a mouse cursor.

7. In the E-mail address field, type in your email address.

Note: Your email address is your One Main username followed by @onemain.com (example: username@onemain.com).

8. Click the Next button.

A screenshot of the 'Internet Connection Wizard' window, specifically the 'Internet E-mail Address' step. The window has a blue title bar with the text 'Internet Connection Wizard' and a close button. Below the title bar, the text 'Internet E-mail Address' is displayed in a bold font. A mouse cursor is pointing at a star icon in the top right corner. The main area contains the instruction: 'Your e-mail address is the address other people use to send e-mail messages to you.' Below this, there is a label 'E-mail address:' followed by a text input field containing 'username@onemain.com'. Underneath the input field, it says 'For example: someone@microsoft.com'. At the bottom of the window, there are three buttons: '< Back', 'Next >', and 'Cancel'. The 'Next >' button is highlighted with a dotted border.

- 9. Click the down arrow on the My incoming mail server is a drop-down list and choose POP3.
- 10. In the Incoming mail (POP3 or IMAP) server field, type pop.onemain.com.
- 11. In the Outgoing mail (SMTP) server field, type smtp.onemain.com.
- 12. Click the Next button.



Internet Connection Wizard

E-mail Server Names

My incoming mail server is a server.

Incoming mail (POP3 or IMAP) server:

An SMTP server is the server that is used for your outgoing e-mail.

Outgoing mail (SMTP) server:

< Back **Next >** Cancel

- 13. In the Account name field, type in your username.**
- 14. In the Password field, type in your password.**
- 15. Click the Next button.**



Internet Connection Wizard

Internet Mail Logon

Type the account name and password your Internet service provider has given you.

Account name:

Password:

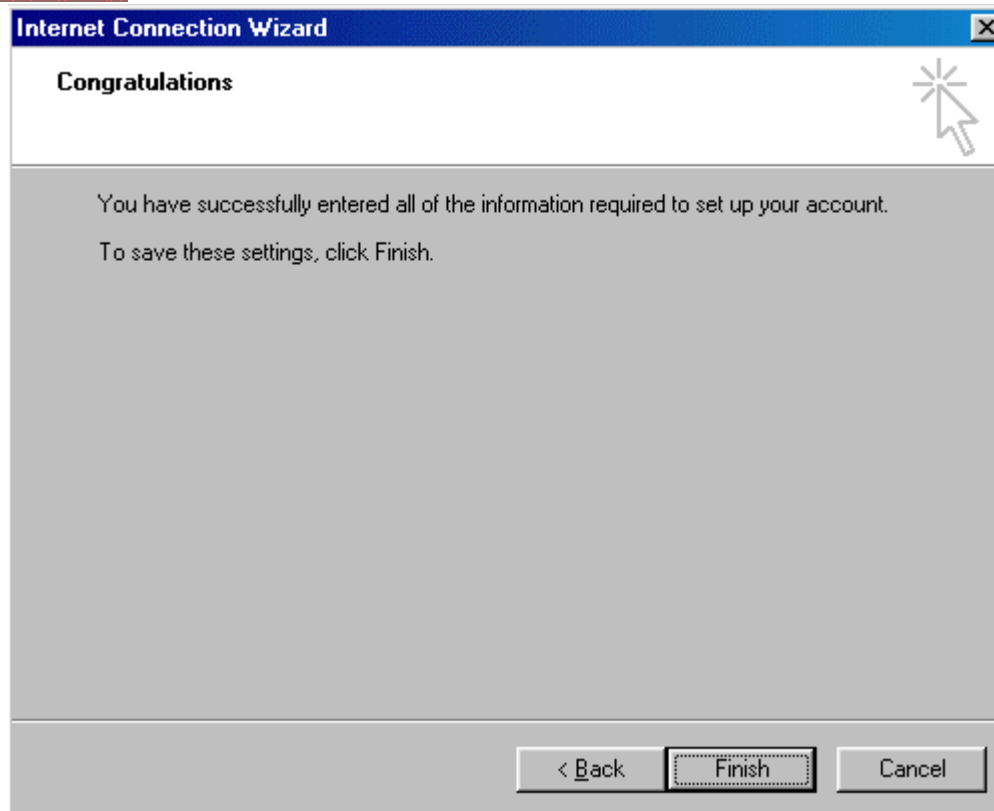
Remember password

If your Internet service provider requires you to use Secure Password Authentication (SPA) to access your mail account, select the 'Log On Using Secure Password Authentication (SPA)' check box.

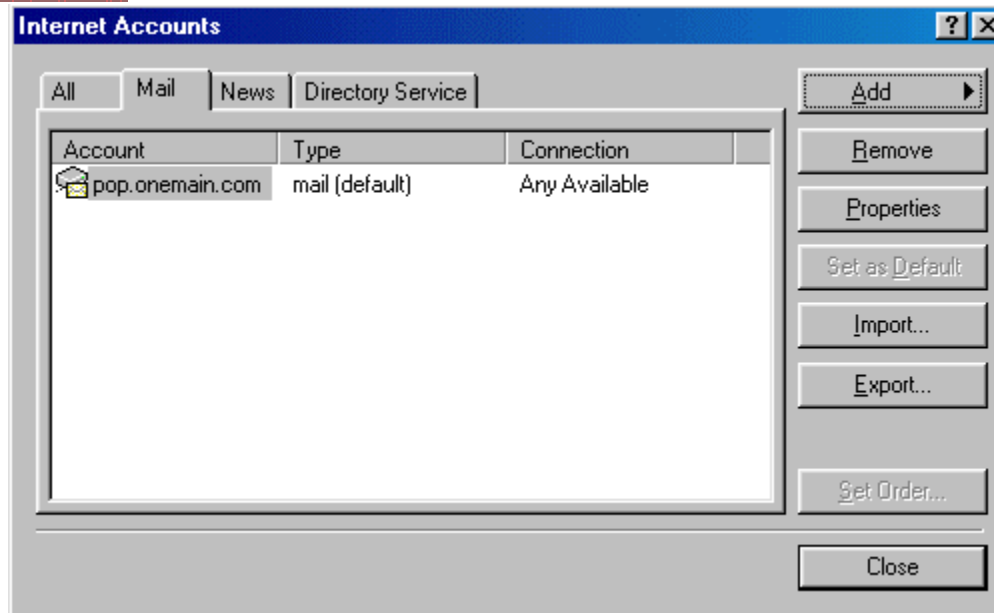
Log on using Secure Password Authentication (SPA)

< Back Next > Cancel

16. Click the Finish button.



17. Click the Close button.



Your One Main email account is configured for use with Outlook Express.